



Installation Process

Electric tail gate lift system



NOTICE

Notice of installation of electric tail gate lift system

1. In order to ensure the products could be safely used, pls have profession technician to install.

Do not dismantle it by yourself in case damage to the unit and accident.

2. Before installation, pls start engine, check if dash board display, all buttons inside the car works OK and if there is scratches inside and outside the car; if any problems, pls feedback to customer timely.

3. Check if tail gate could be opened/closed normally and car light works.

4. Turn off the engine, prepare the tools.

5. Technician should ensure no metal or hard stuff with you in case damage the interior or seat.

6. During the installation, pls take care of all the removed part, not leave any debris inside, plug should be protected in case short circuits.

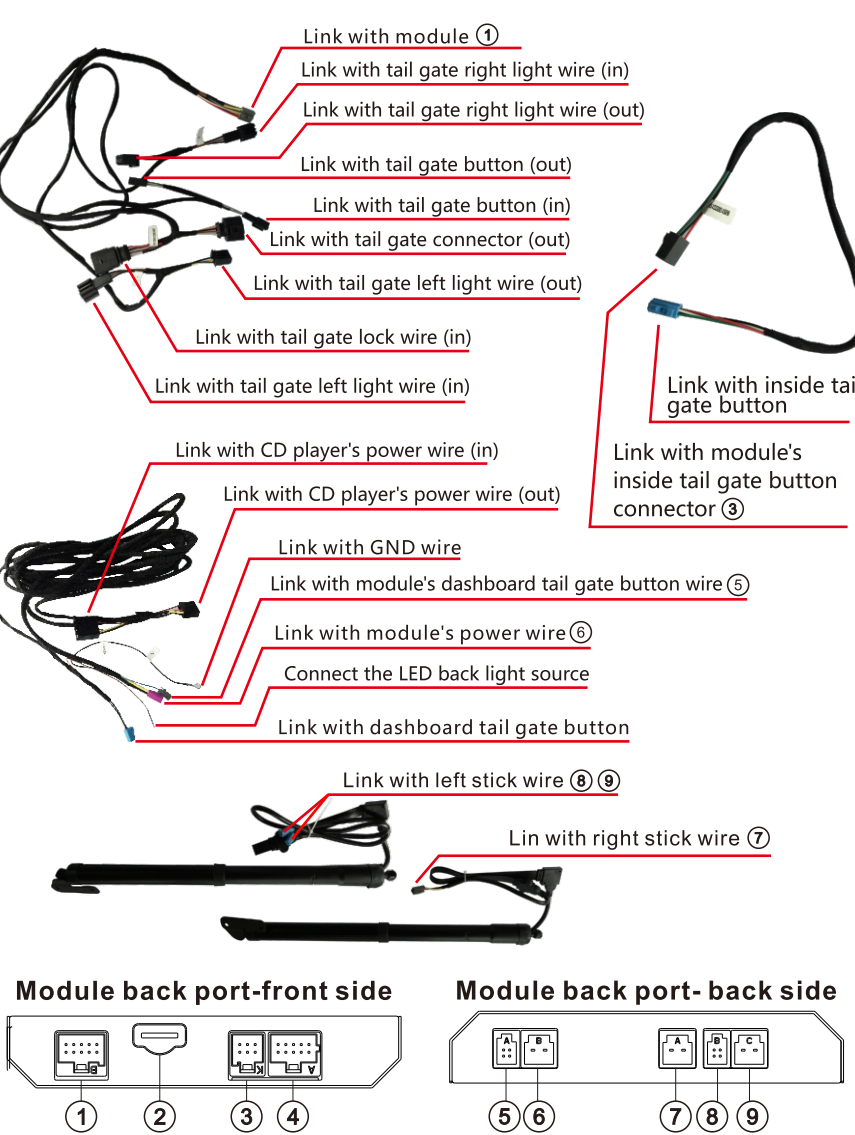
7. Pay attention to the cables, in case it effect the move of steering wheel, brake and accelerator; fix all the cables to avoid loose.

8. According to our diagram, link all the cables (be careful about the ground cable's position)

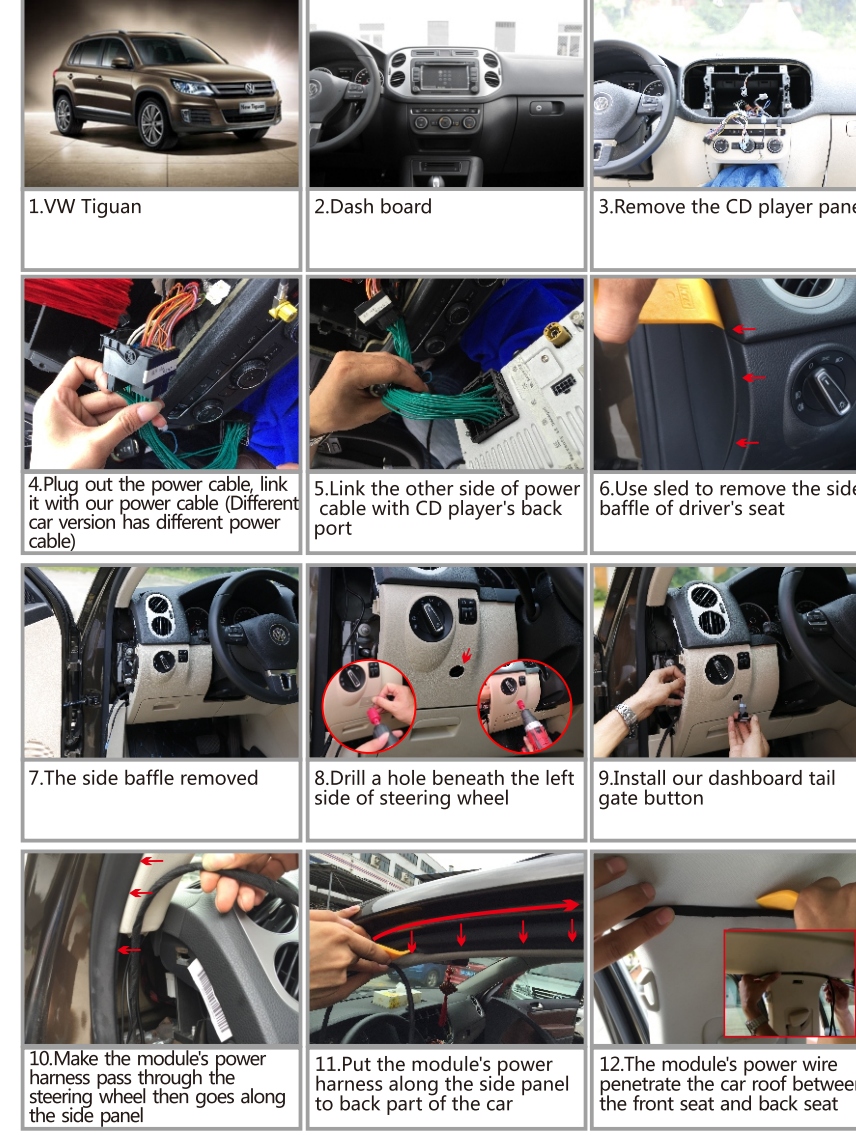
9. Pls not unplug the connected wire/accessories when the unit's on in case damage to the unit/accessories.

▲ After the installation finished, close the tail gate by your hand, so the system could initialize.

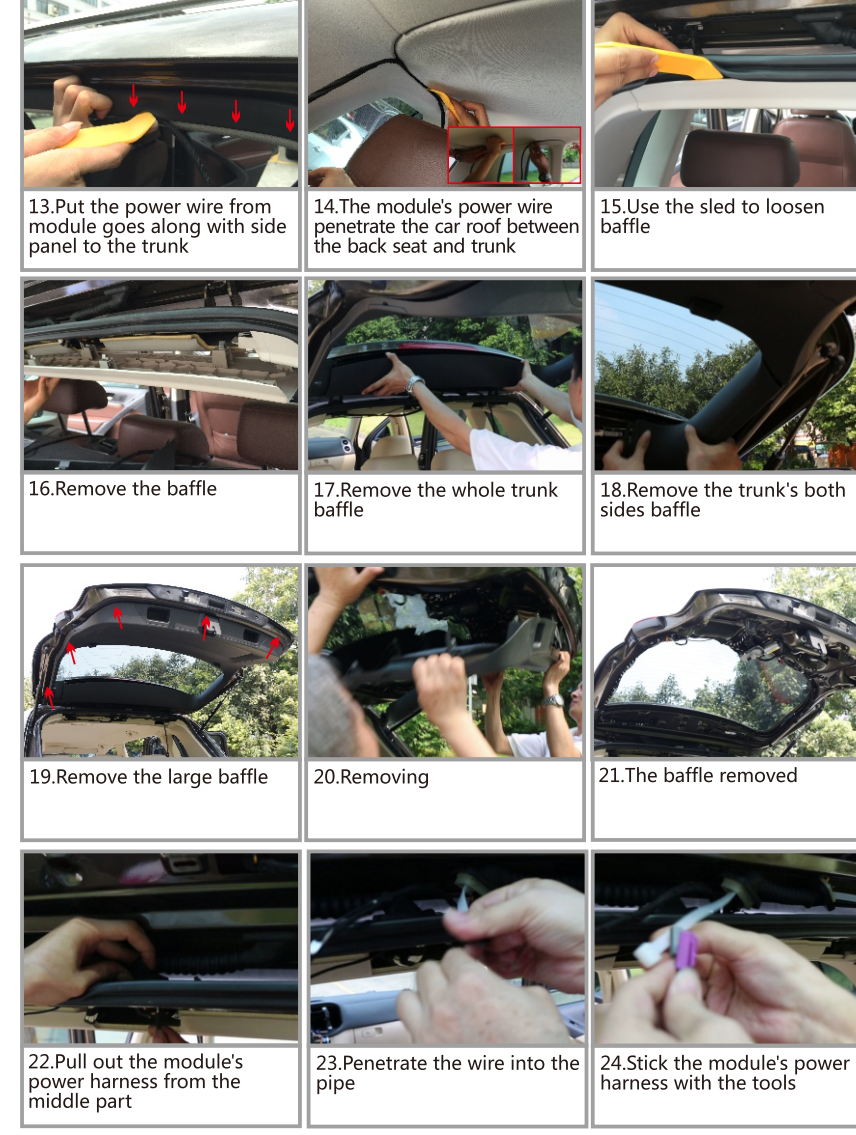
Wire Description



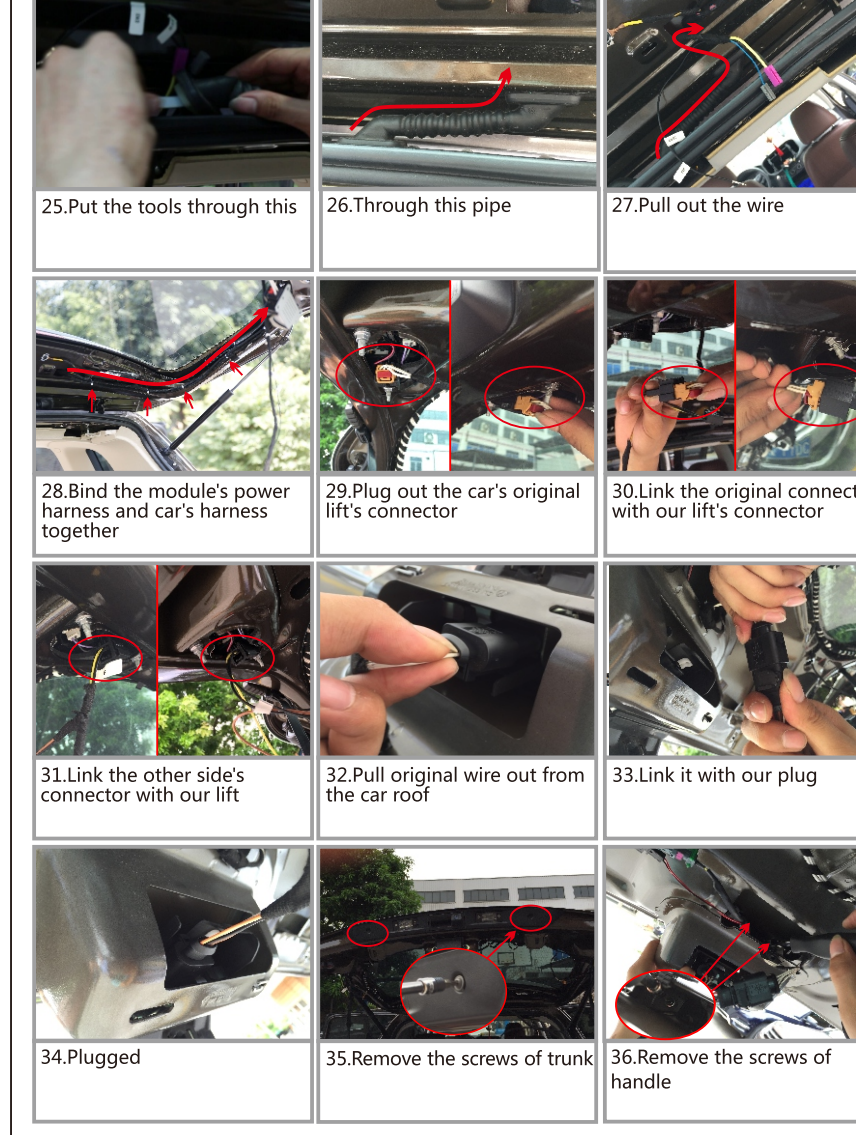
Installation steps



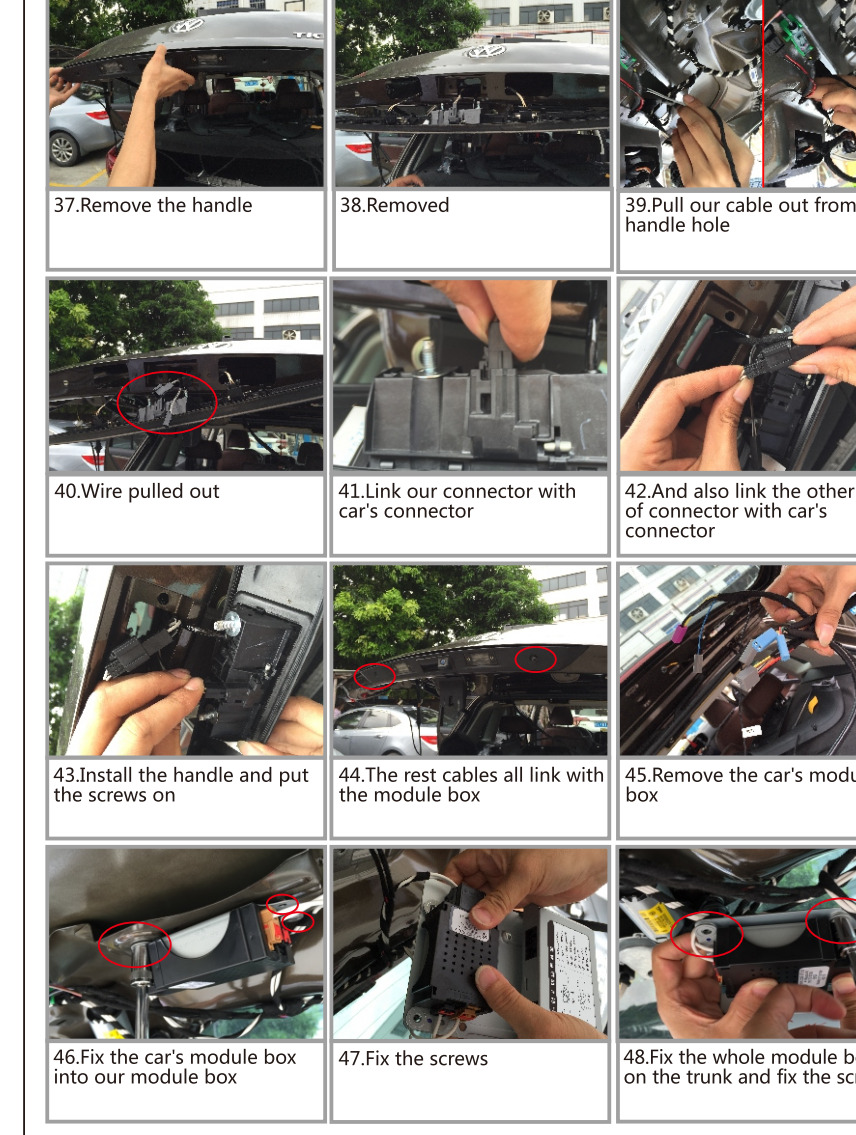
Installation steps



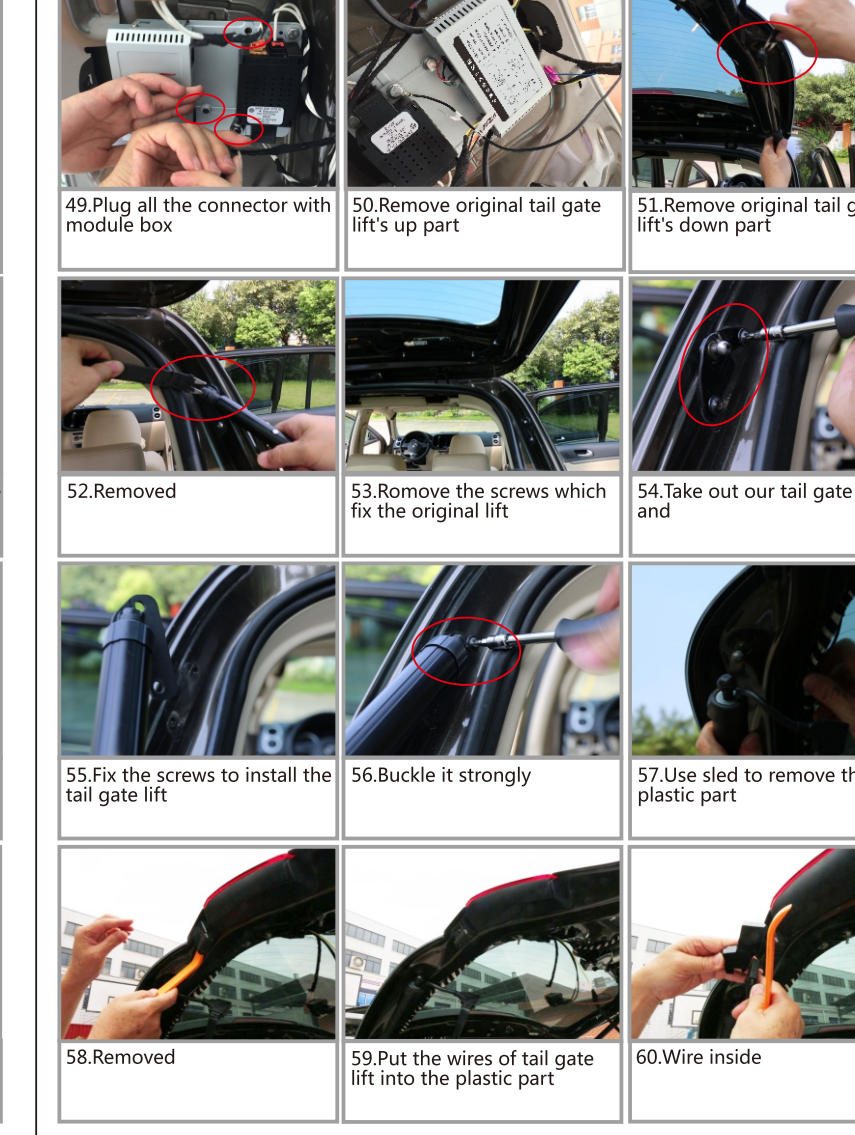
Installation steps



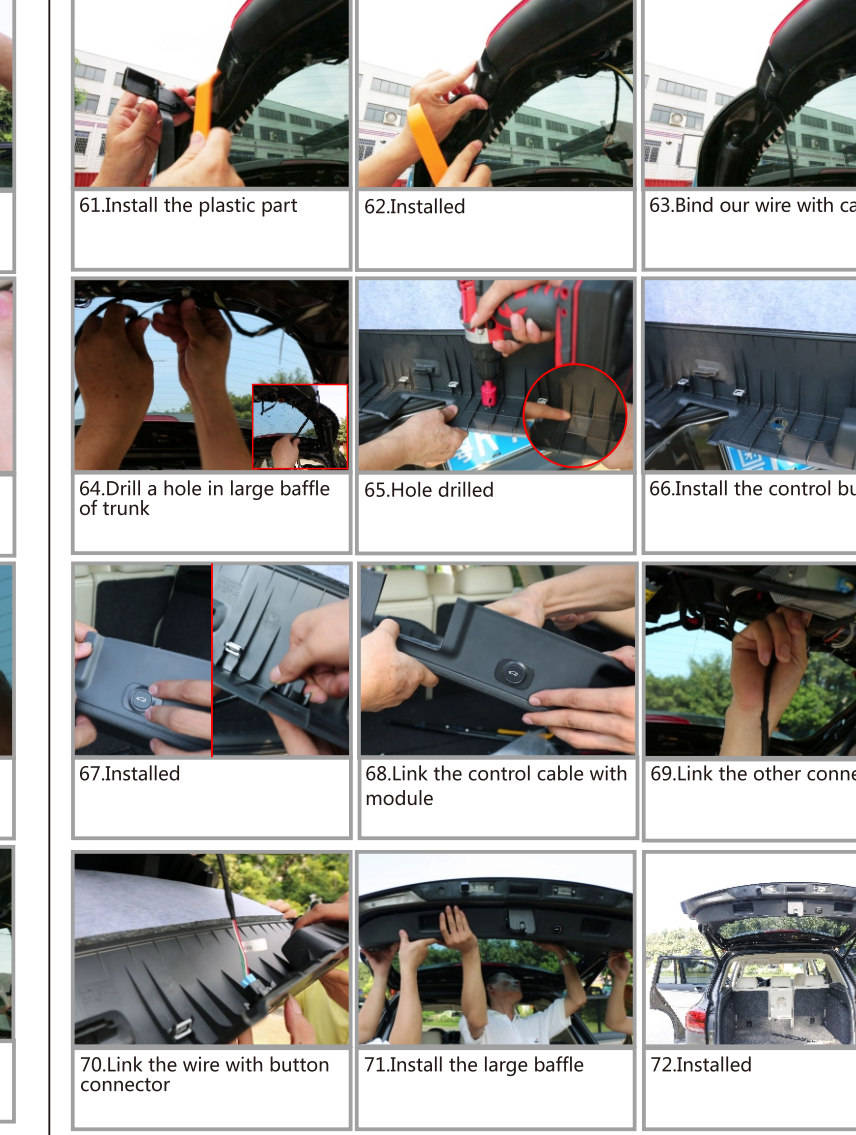
Installation steps



Installation steps



Installation steps



Installation steps

