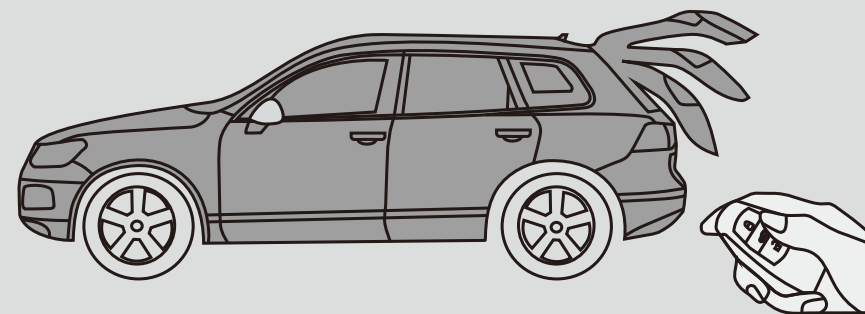


## Installation Process

### Electric tail gate lift system



NO:5628161020000

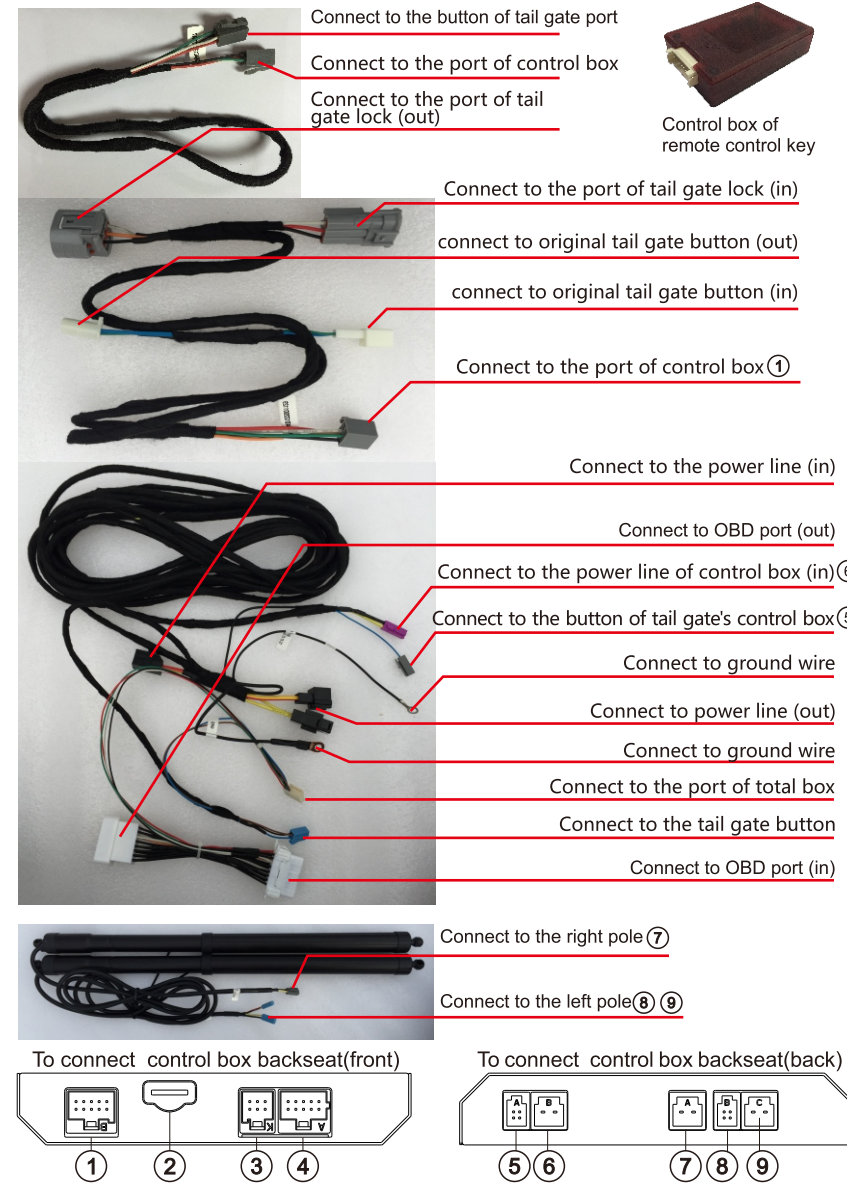
#### NOTE

##### Note for electronic tail gate installation

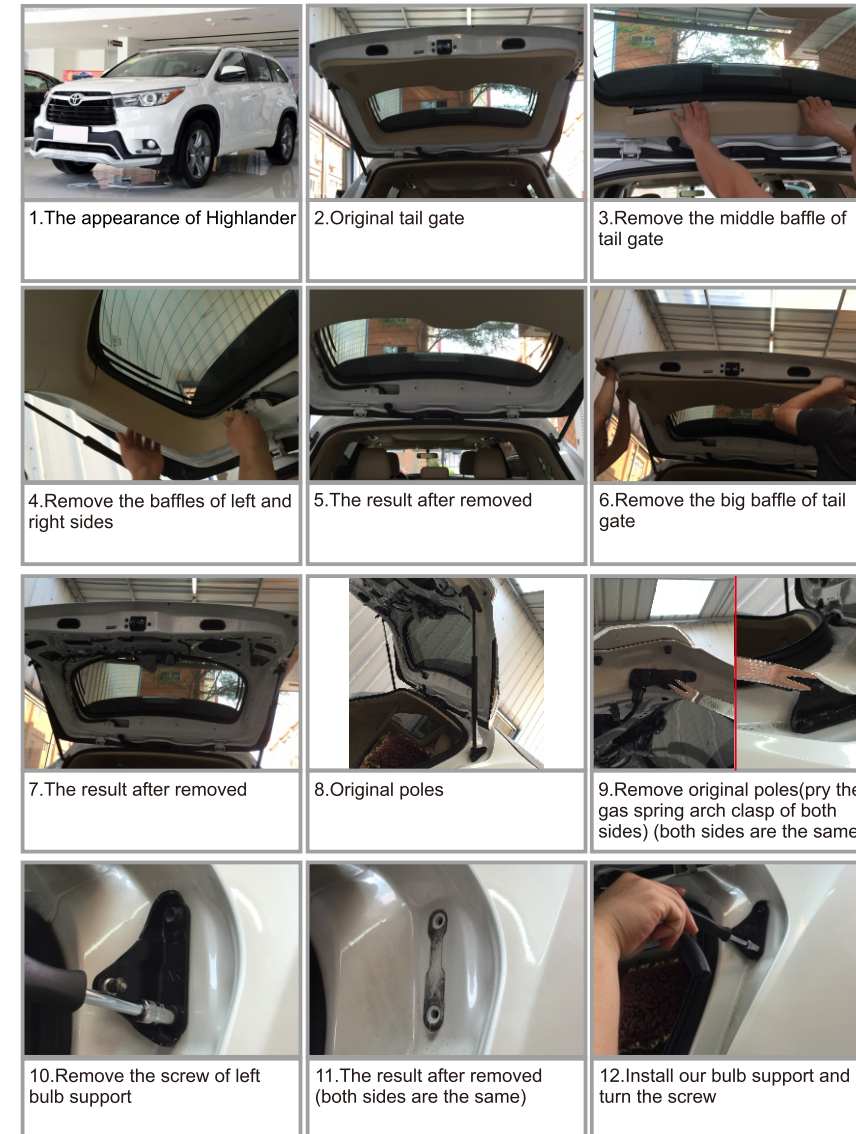
- 1.For the sake of safety, and ensure that the product of normal use, please ask the sales of the products of professional personnel to install, do not to remove the machine, lest cause damage of the machine has the accident.
- 2.Loading before starting the engine, check the car instrument, according to the function keys inside the car is normal operation, the car inside and outside surface had scratched phenomenon, if there are any problems, report to the customer in time.
- 3.Check whether the tail door open/close to normal, check whether the lamp is normal
- 4.Turn off the engine, and prepare related tools
- 5.Please remove installation personnel carries on metal objects, and other hard objects to prevent in the process of dismantling the car seat or interior damage, etc.
- 6.The installation process and pay attention to remove the car component to put good, avoid the scraping the float inside the instrument desk, when wiring clutter left by the timely processing, don't stay in the car, must be properly insulating joint, to avoid short circuit.
- 7.According to our wiring way, to avoid running in the process of impact to the car's moving parts, such as steering wheel drive shaft, the accelerator and brake pedal until the vehicle control unit, the harness after next go line needs to be fixed, to avoid any loose.
- 8.Root tree our connection mode, please pick up the wiring harness(pls be care for the position of ground wire)
- 9.Don't press the plug connected fuses , accessories when it is on, in order to avoid damage to the host or attachment plug

▲ After the installation, close the trunk by manual, so that the system initialization

#### Wire definition



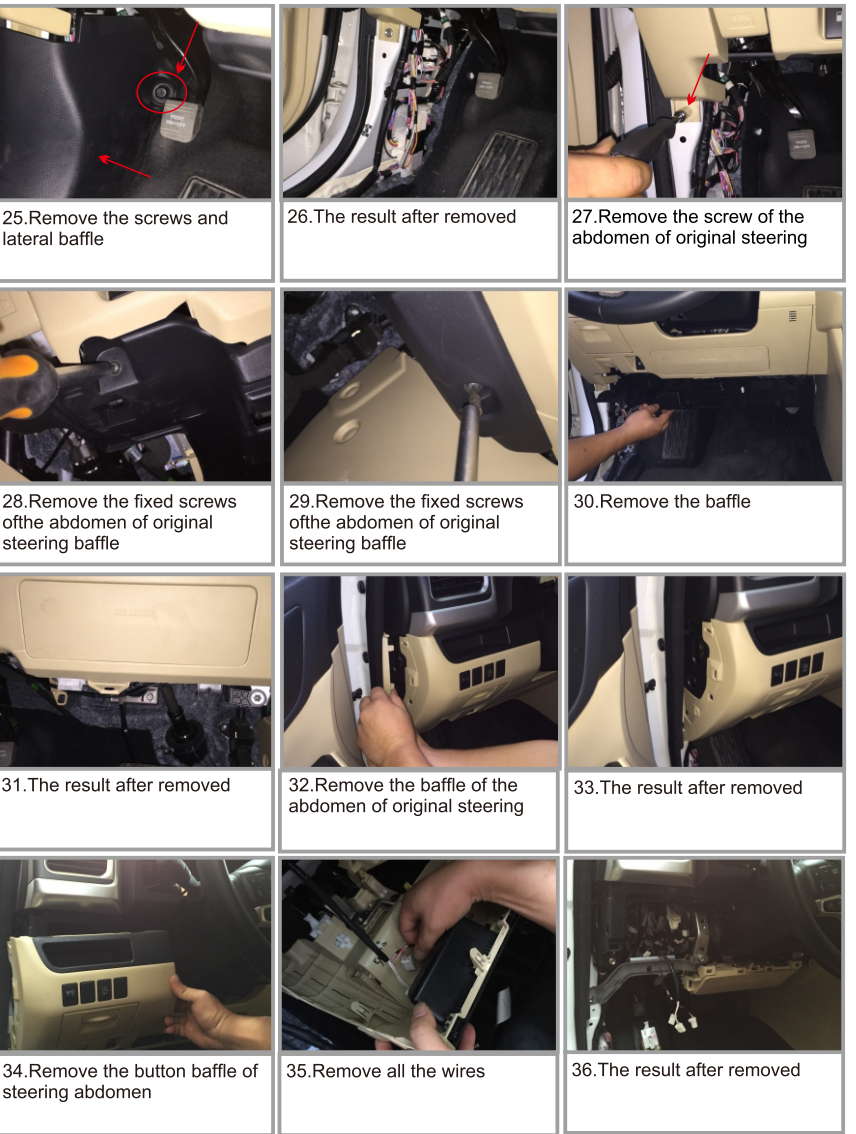
#### installation steps



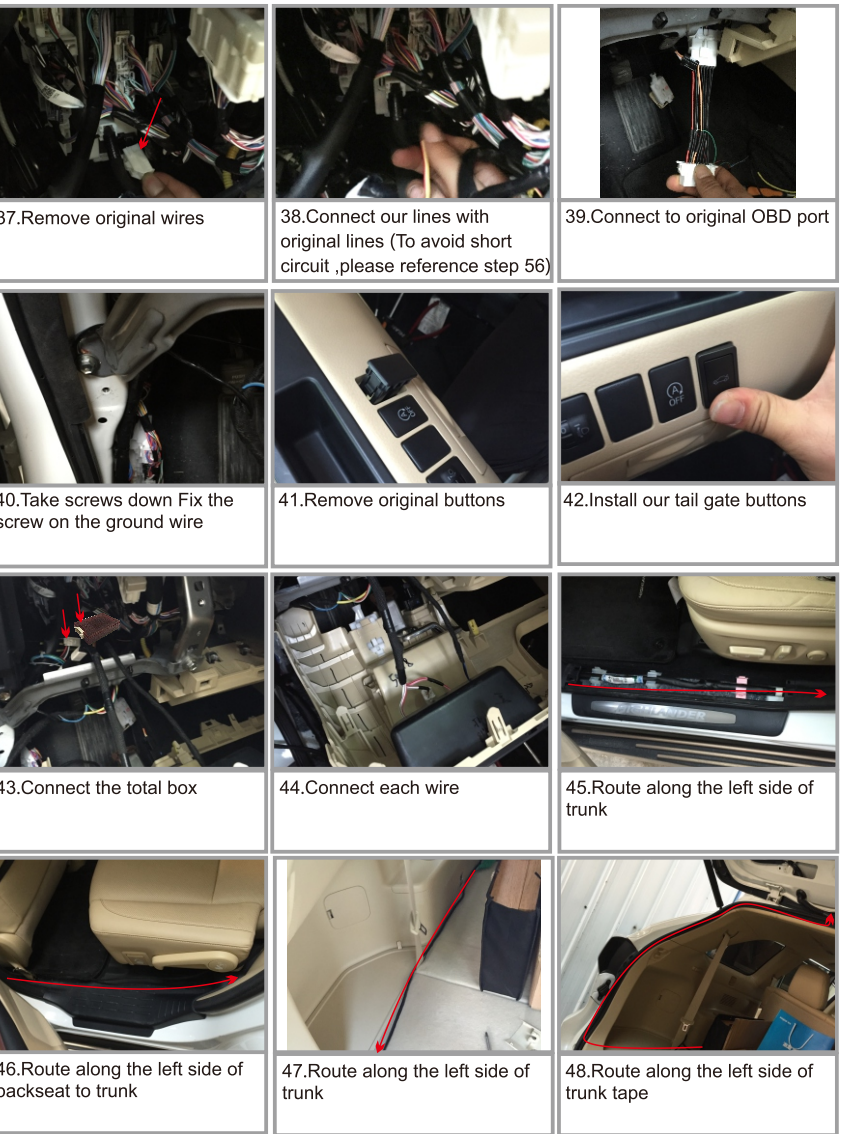
#### installation steps



#### installation steps



#### installation steps



#### installation steps

